

RXQUEST

SU01

SUMMER-SUV-UHP

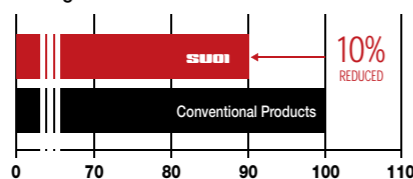


Specially designed UHP SUV tire.

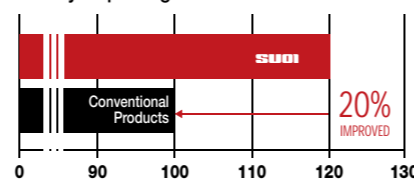


Four main grooves drain water efficiently to improve handling in wet conditions.

Rolling Resistance



Tire Hydroplaning Resistance



■ **Safety**

The center rib design provides greater traction for safer acceleration and braking.

■ **Wear Resistance**

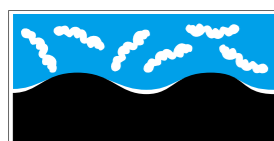
The silicon compound tread makes the tire more wear resistance.

■ **Comfortable Ride**

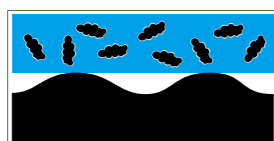
The tread block pitch and built-in sipes reduce tire vibration and noise for a more comfortable ride.

1 Extensive use of white carbon black helps reduce tire rolling resistance and improve skid resistance.

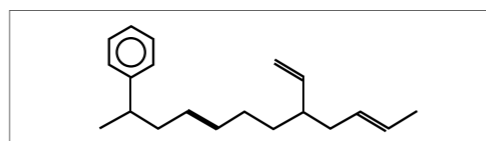
White Carbon Black Filler



Carbon Black Filler



2 The body material is composed of a special tread compound to increase hydroplaning resistance and improve heat dissipation.



The friction generated using white carbon black is smaller when compared to standard carbon black to greatly reduce rolling resistance. It also had greater elasticity making it easier to absorb abrasions and increase grip.

RIM	SIZE	LI/SS		T.D.	STANDARD RIM	S.W.	O.D.	MAX.LOAD	MAX.PRESSURE	UTQG	SIDEWALL
				mm	inch	mm	mm	KG	kPa		
17	235/55R17	103W	XL	8	7 1/2J	245	690	875	340	280/AA/A	BSW
18	225/55R18	102W	XL	8	7J	233	705	850	340	280/AA/A	BSW
18	225/60R18	100V	--	8	6 1/2J	228	727	800	300	280/AA/A	BSW
18	235/50R18	97V	--	8	7 1/2J	245	693	730	300	280/AA/A	BSW
18	235/55R18	104W	XL	8	7 1/2J	245	715	900	340	280/AA/A	BSW
18	235/60R18	107W	XL	8	7J	240	739	975	340	280/AA/A	BSW
18	245/60R18	105V	--	8	7J	248	751	925	300	280/AA/B	BSW
18	255/55R18	109Y	XL	8	8J	265	737	1030	340	280/AA/A	BSW
18	255/60R18	112V	XL	8	7 1/2J	260	763	1120	340	280/AA/B	BSW
18	265/60R18	110V	--	8	8J	272	775	1060	300	280/AA/B	BSW
18	275/40R18	103W	XL	8	9 1/2J	278	677	875	340	280/AA/A	BSW
19	235/55R19	101W	--	8	7 1/2J	245	741	825	300	280/AA/A	BSW
19	245/55R19	103V	--	8	7 1/2J	253	753	875	300	280/AA/A	BSW
19	255/55R19	111Y	XL	8	8J	265	763	1090	340	280/AA/A	BSW
19	265/50R19	110Y	XL	8	8 1/2J	277	749	1060	340	280/AA/A	BSW
20	255/40R20	101Y	XL	8	9J	260	712	825	340	280/AA/A	BSW
20	255/55R20	110Y	XL	8	8J	265	788	1060	340	280/AA/A	BSW
20	265/50R20	111Y	XL	8	8 1/2J	277	774	1090	340	280/AA/A	BSW
20	275/35R20	102W	XL	8	9 1/2J	278	700	850	340	280/AA/A	BSW
20	275/55R20	117W	XL	8	8 1/2J	284	810	1285	340	280/AA/A	BSW
20	275/60R20	119V	XL	8	8J	279	838	1360	340	280/AA/B	BSW
20	285/40R20	104Y	--	8	10J	290	736	900	300	280/AA/A	BSW
20	285/50R20	116W	XL	8	9J	297	794	1250	340	280/AA/A	BSW
20	295/35R20	105Y	XL	8	10 1/2J	301	714	925	340	280/AA/A	BSW
21	275/45R21	110Y	XL	8	9J	273	781	1060	340	280/AA/A	BSW
22	285/45R22	114W	XL	8	9 1/2J	285	815	1180	340	280/AA/A	BSW
22	305/40R22	114W	XL	8	11J	313	803	1180	340	280/AA/A	BSW
22	305/45R22	118W	XL	8	10J	303	833	1320	340	280/AA/A	BSW

1inch=25.4mm | 1kPa=0.142psi | 1KG=2.2 lbs | XL Extra Load | LI Load Index | SS Speed Symbol