

**RXQUEST**

**A/T**

**SUMMER-SUV AT**



WEAR RESISTANCE CROSS-COUNTRY PUNCTURE RESISTANT RESILIENT

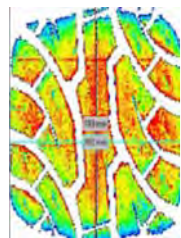
SUMMER

WINTER

ALL SEASON



All-Terrain tire for pickups, vans, and SUVs. Great traction on wet and muddy terrain, excellent handling, and outstanding driving comfort on both urban off-road and poorly-paved terrain.



**Contour Design**

The new contour design improves carcass strength to ensure superior carrying capacity, and at the same time enables uniform contact pressure distribution for even tread wear.



■ **Wet Performance**

Wide grooves within the tread effectively drain water from the tire for greater performance in wet weather conditions.

■ **Handling Performance**

Reinforced central rib enhances maneuverability and high-speed driving performance.

■ **Specially Designed Tread**

The wide all-terrain tread pattern contains large blocks and wide grooves for superior driving capability on both on and off-road conditions.



RIM	SIZE		LI/SS	T.D.	STANDARD RIM	S.W.	O.D.	MAX.LOAD	MAX.PRESSURE	SIDEWALL
				mm	inch	mm	mm	KG	kPa	
15	31x10.50R15LT	6PR	109R	13	8 1/2J	268	775	1030	350	OWL
15	LT215/75R15	6PR	100/97R	12	6J	216	703	800/730	350	OWL
15	LT235/75R15	6PR	104/101R	13	6 1/2J	235	733	900/825	350	OWL
15	LT235/75R15	8PR	110/107R	13	6 1/2J	235	733	1060/975	450	OWL
16	LT215/85R16	10PR	115/112R	12.5	6J	216	772	1215/1120	550	OWL
16	LT225/70R16	6PR	102/99R	12.5	6 1/2J	228	722	850/775	350	OWL
16	LT225/75R16	10PR	115/112R	13	6J	223	744	1215/1120	550	OWL
16	LT235/70R16	6PR	104/101T	12	7J	240	736	900/825	350	OWL
16	LT235/85R16	10PR	120/116R	13	6 1/2J	235	806	1400/1250	550	OWL
16	LT235/85R16	10PR	120/116R	13	6 1/2J	235	806	1380/1260	550	OWL
16	LT245/75R16	10PR	120/116S	13	7J	248	774	1400/1250	550	OWL
16	LT245/75R16	10PR	120/116S	13	7J	248	774	1380/1260	550	OWL
16	LT265/70R16	6PR	110/107R	13	8J	272	778	1060/975	350	OWL
16	LT265/70R16	8PR	117/114R	13	8J	272	778	1285/1180	450	OWL
16	LT265/75R16	10PR	123/120R	13	7 1/2J	267	804	1550/1400	550	OWL
18	LT275/70R18	10PR	125/122R	12.5	8J	279	843	1650/1500	550	BSW

1inch=25.4mm	1kPa=0.142psi	1KG=2.2 lbs	XL Extra Load	LI Load Index	SS Speed Symbol
SBL: Serrated Black Letter			OWL: Outlined White Letter		